

NAS NVRmini Linux Embedded Standalone

Support Megapixel and H.264 cameras



Manage 4/8/16 IP Cameras



Key Benefit

Stability and Reliability

NVRmini is a linux-embedded system that is free from virus attack. With its server-client architecture, NVRmini provides a most stable and high quality monitoring and recording performance. Not only does its software offer a top quality performance, but the hardware enhances stability as well by supporting 4 RAID levels, smart fan, HDD SMART, auto power on, UPS and much more.

Easy to Use

A top user-friendly system should combine fast and flexible configuration with easy operation. With a few simple steps for installation, the web-based management leads users to configure, monitor and playback video everywhere. UPnP search, auto camera detection and GUI schedule save setting-up time, while the easy drag and drop camera, auto scan, preset point patrolling, and multiple views offer users a prime monitoring experience.

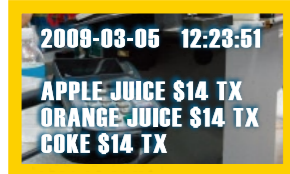
Value-added surveillance features

There are some outstanding features included in the NVRmini, one of which is mobile phone client. Users can check their live video wherever they want through iPhone, iPad, Anroid, Windows Phone 7, or BlackBerry. Another feature is Point of Sale (POS). POS data is displayed on live screen of designated channels, and users can fast search POS transaction and related video records. Still another NVRmini feature is the digital watermark on exported video and snapshots, which prevents data from tampered without awareness.

Key features

- Server-client architecture
- Easy installation – only 4 steps
- Support iPhone, iPad, Android, Windows Phone 7, BlackBerry mobile clients
- Web-based live viewer/ playback
- Online GUI recording schedule
- Up to 2/4 SATA HDD bays
- RAID 0,1,5,5+spare,10
- Support D1, real-time recording
- Support audio
- Real-time digital output and email alert
- Up to 128 CH remote liveview
- Playback with 5 intelligent search
- Support Point of Sale (POS)
- Support digital watermark
- Supported by NUUO Central Management System

Web-Based Liveview

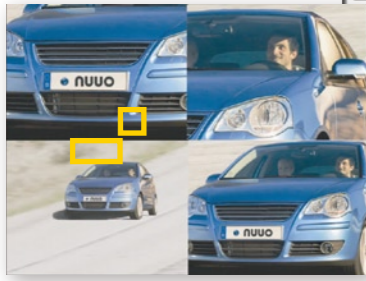


Point of Sale (POS)

POS text overlay on live view video and recordings. All recorded POS transactions are searchable in the NVRmini database.



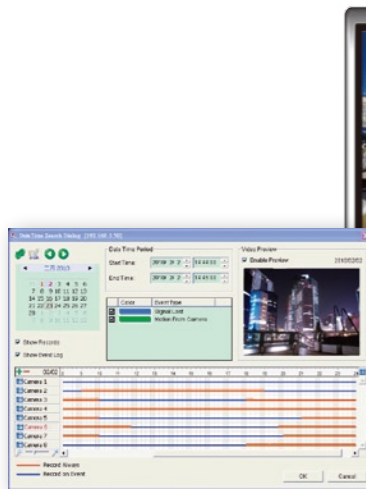
- Web-based management (Recommend on IE7 or above)
- Up to 128 CH remote live display on multiple monitors
- Easy drag-and-drop camera on screen
- Camera PTZ integration
- Digital PTZ
- Auto scan
- Multiple views
- Preset point set, go and patrolling
- Support joystick
- System event popup
- Camera event on screen display and sound notification



Multiple View

with duplicating camera on screen and with different digital zoom image.

Intelligent Playback



Video Enhancement

Fine-tune the image's visibility, sharpness, brightness, contrast or even grey scale.

- Open record by time, graphic record, event log
- Multi-channel playback
- Playback system with 5 intelligent search
- Video enhancement
- POS search
- Support digital watermark on exported video or snapshot
- Evidence Export
- Auto backup video to FTP



5 intelligent search

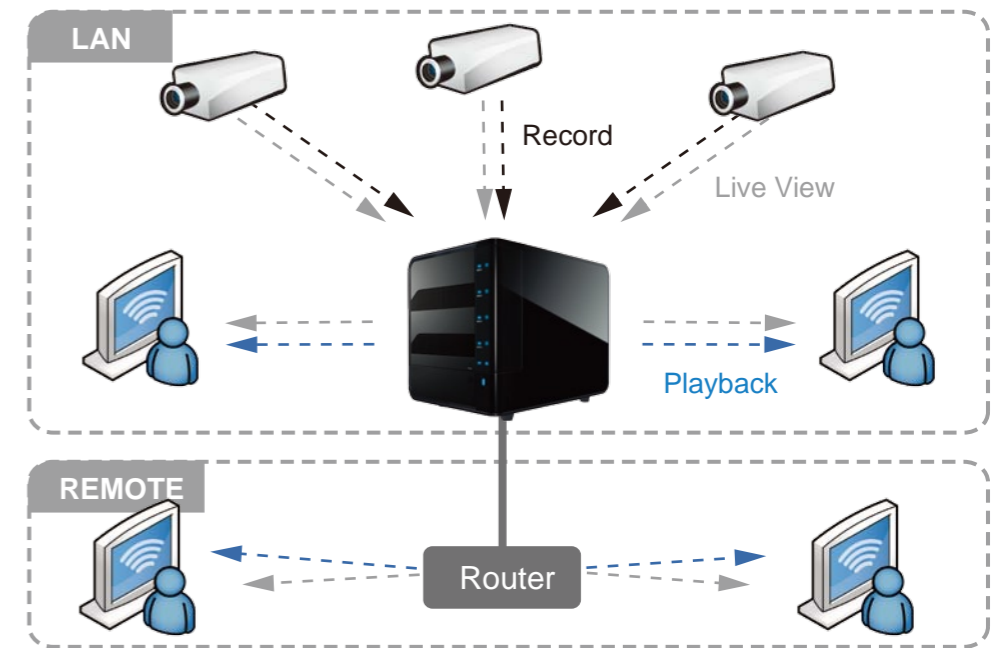


Multiple Language Support

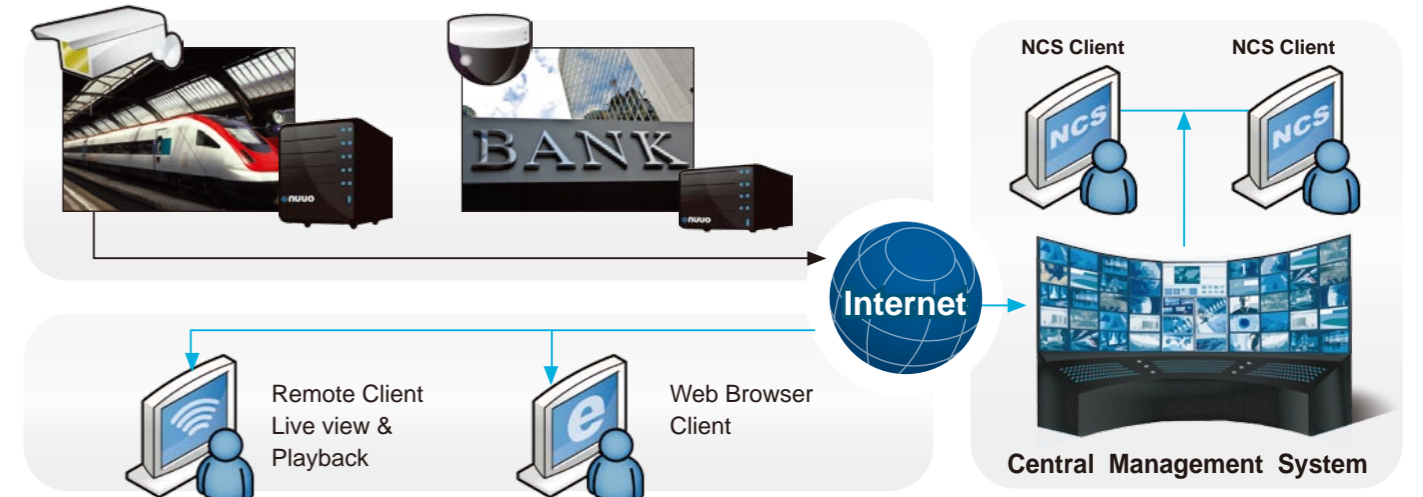
Czech, Dutch, English, French, German, Hungary, Italian, Japanese, Korean, Polish, Portuguese (Brazil), Russian, Serbian, Spanish, Swedish, Traditional Chinese

Server-Client Architecture

- Linux Embedded – Free from PC crash and virus attack
- RAID 0,1,5,5+spare and 10, prevention of data loss
- Online GUI recording schedule
- Recording without PC turning on
- Support Megapixel Camera and H.264 Compression Format
- Support D1, real-time recording
- Support audio recording
- Camera I/O integration
- Real-time digital output, email and NUUO CMS alert
- Four kinds of user authorities: administrator, power user, user, and guest
- Log System
- Support Point of Sale (POS)

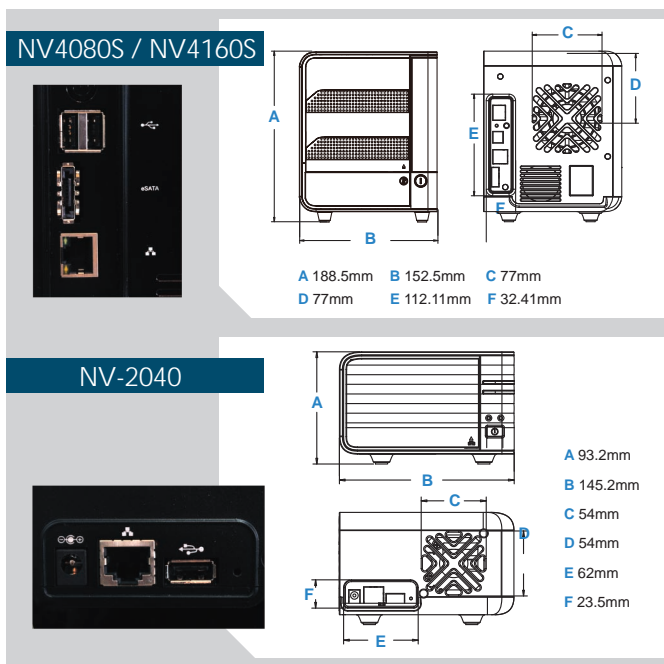


<p>Server-Client Architecture Centralizes all video data transaction only via NVRmini to remote clients, thus ensure good recording quality even with maximum of remote client access.</p>	<p>Linux-Embedded Embedded Linux for high stability and free from virus attack</p>	<p>EASY Only 4 step Plug and Play</p>	<p>Web-Based Live Viewer Users can login anytime anywhere via Internet Explorer and can login via four different user groups: administrator, power user, user, and guest.</p>	<p>Compatible with CMS Ultimate central monitoring solution for grand scale projects and projects with multiple sites.</p>	<p>Multi-Platform Mobile Clients iPhone, iPad, Android, Windows Phone 7 and BlackBerry.</p>
<p>Intelligent Search Search recorded video for 5 events including general motion, foreign object, missing object, loss focus and camera occlusion.</p>	<p>RAID 0,1,5,5+spare,10 Support RAID 0,1,5,5+ spare and 10 for maximum capacity or data protection.</p>	<p>PTZ Control Software enables digital PTZ function. Physical PTZ control and preset/go functions are also available.</p>	<p>128CH Remote Live View Monitor multiple NUUO servers (NVR, DVR, NDVR and NVRmini) simultaneously in one single interface.</p>	<p>Email Alert Notify users on camera and system event through sound, digital output, E-mail and NUUO CMS alert.</p>	<p>Point of Sale (POS) All recorded POS transactions are searchable in the NVRmini database.</p>



Specification

Model	NV-2020	NV-2040	NV-4080S	NV-4160S
Recording Camera	1-2	1-4	1-8	1-16
Number of Drives	2xSATA II	2xSATA II	4xSATA II	4xSATA II
Embedded Drives (US only)	1 ~ 4TB	1 ~ 4TB	1 ~ 8TB	1 ~ 8TB
RAID Level	RAID 0,1	RAID 0,1	RAID 0, 1, 5, 5+Spare, 10	RAID 0, 1, 5, 5+Spare, 10
I/O Interface	1xUSB 2.0 (for UPS)	1xUSB 2.0 (for UPS)	2xUSB 2.0 (for UPS), 1xeSATA (for DAS)	2xUSB 2.0 (for UPS), 1xeSATA (for DAS)
LAN Transmission Speed	10/100/1000 Mbps (RJ45)	10/100/1000 Mbps (RJ45)	10/100/1000 Mbps (RJ45)	10/100/1000 Mbps (RJ45)
Dimension	92.0 x 145.2 x 213.2 mm	92.0 x 145.2 x 213.2 mm	188.5 x 152.5 x 227.6 mm	188.5 x 152.5 x 227.6 mm
Temperature	Operating: 5°C to 35°C (±5°C)			
Humidity	Operating: 10%-85%			
Compression Format	MPEG4, M-JPEG, H264, MxPEG (Depends on IP camera)			
Recording Performance	Camera dependent (Around 60fps at 1.3M) Total bitrate: 20Mbps	Camera dependent (Around 60fps at 1.3M) Total bitrate: 20Mbps	Camera dependent (Around 185fps at 1.3M) Total bitrate: 65Mbps	Camera dependent (Around 160fps at 1.3M) Total bitrate: 55Mbps
Remote PC CPU	Intel Core 2 Duo, 2.6 GHz			
Remote PC RAM	1 GB			
User Interface	HTTP Web browser - Internet Explorer 7 or later/ NUUO Client Application Program			
Recording Type	Continuous record, Record by schedule, Manual record, Event trigger record, Digital input trigger record			
Remote Live View Control	Live view, Preset / Go, PTZ functions, Remote I/O, Snapshot			
Audio & Video Recording	Audio & video recording in synchronization			
POS	Live view, record and search for every transaction			
Auto Backup	Automatically backup the recorded video of the previous date to FTP			
Smart Search	General motion, Missing object, Foreign object, Lose focus, Camera occlusion			
Remote Client OS Platform	Windows XP/ 2003/ Vista/ 7			
Remote Live View Connections	Live view maximum 16 connections at the same time			
Mobile Client OS Platform	iPhone, iPad, Android, Windows Phone 7, BlackBerry			
IP Camera Brand Support	ACTi, ArecontVision, ARM, Axis, Basler, Brickcom, Bosch, Cisco, CNB, D-Link, Dynacolor, Eneo, Fine, HIKVision, IQinVision, LevelOne, Lumenera, Linksys, Mobotix, Onvif, Panasonic, Samsung, Santec, SANYO, Sony, StarDot, Toshiba, Videosec, VIVOTEK, Zavio,			



Support 30 brands of IP cameras and 800 models

