

# VTL-WWD

Home | Security | Housings | for Boxed Cameras

VTL-WWD

Weatherproof Housing (300mm) RAL9002, Wallbracket,

Thermostat, Heater 12-24V

**Art-Nr. 79644**



SLD Security &  
Communications

## Main Features

Camera Weatherprotection

Integrated Wall Bracket

Fold-down Housing Body

Insulated Camera Mounting

Max. Installation Length 300mm

Cable Entry Through the Wall Bracket

PTC Screen Heater 12-24V

Protection Rating IP66

Housing Surface RAL9002

## Specifications

Series	eneo VTL
Maximum installation length	300
Clear Shield	no
Window heater	yes, 12~24V/20watts (PTC)
Blower	optional
Wiper	no
Supply voltage	12~24V
Sunshield	yes
Hidden cable management	yes
Cable entry	Through the wall bracket
Integrated wall mount	yes
Protection rating	IP66
Housing	Outdoor
Housing material	Aluminium

# VTL-WWD

(Continuation Specifications)

<b>Colour (housing)</b>	RAL9002
<b>Dimensions (HxWxD)</b>	See drawing
<b>Weight</b>	4.0kg

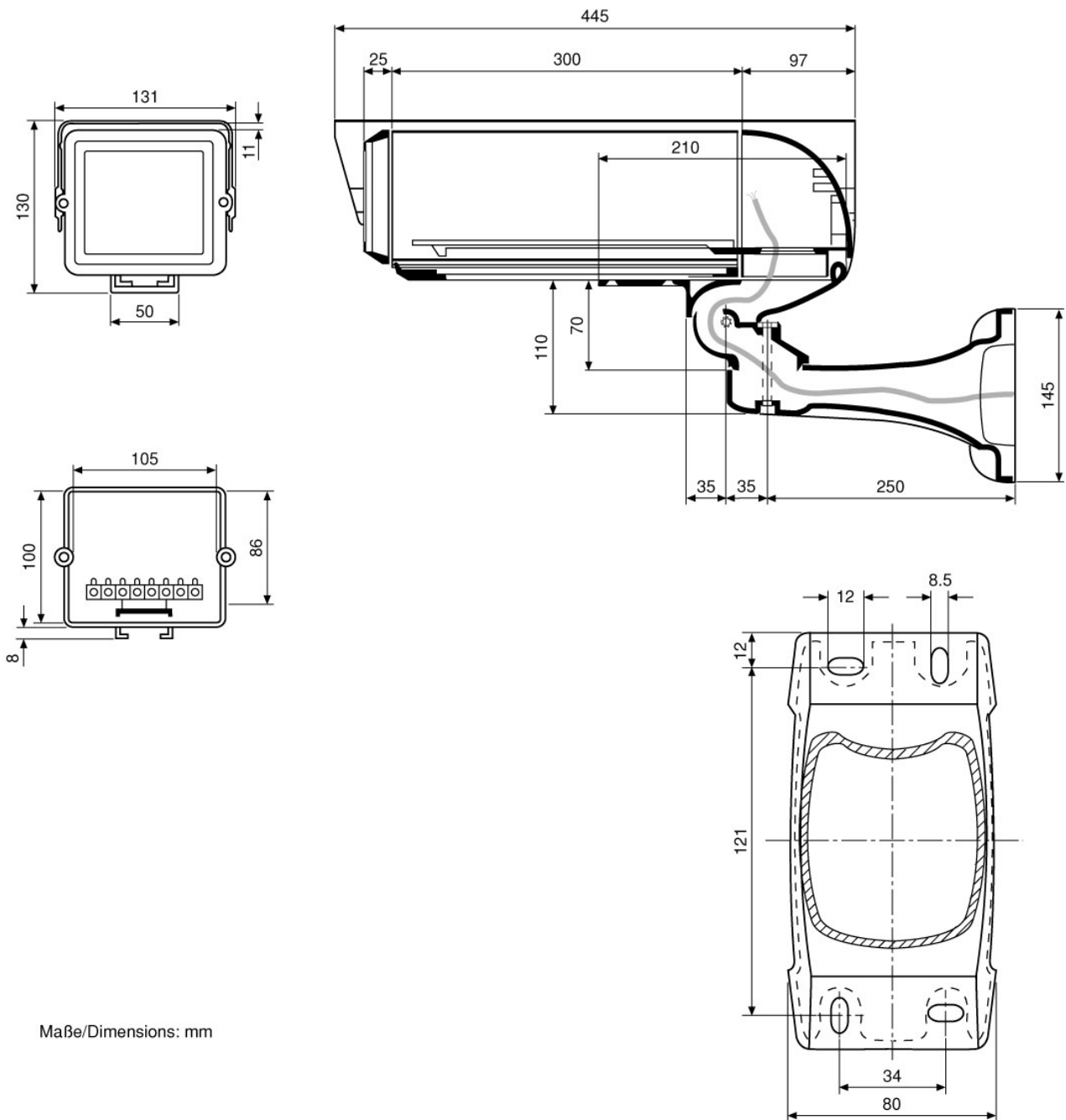
## Optional accessories

<b>79592</b>	<b>PM-6S</b>	Pole Mount Adapter for 1 Wall Mount, (50-140mm Pole), RAL9002
<b>70457</b>	<b>AK-3</b>	Camera Connection box, 230VAC Input, 24VAC-3.2A, 12VDC-1A Outputs
<b>79593</b>	<b>PM-6D</b>	Pole Mount Adapter for 2 Wall Mounts, (50-140mm Pole), RAL9002
<b>79613</b>	<b>CMA-2</b>	Corner Mount Adapter for Wall Brackets WD-5, WD-7, VTL-WW, VHK-WW, RAL9002

# VTL-WWD

Home | Security | Housings | for Boxed Cameras

## Technical drawing



Maße/Dimensions: mm

SLD Security & Communications  
The Old Forge, Ockham Lane, Ockham, Surrey GU236PH England  
Phone +44.1483225633 · Fax +44.1483225634  
sales@sld.co.uk · www.sld.co.uk

