

# VTL-300/WW-POE

Home | Security | Housings | for Boxed Cameras

VTL-300/WW-POE  
Weatherproof Housing, 300mm, Wall Bracket, Heater,  
12V, High PoE, IP66

**Art-Nr. 79706**



## Main Features

Network camera weather protection	Integrated wall bracket
Humidity protected cable feed-through	Cable entry through the wall bracket
Integrated PoE splitter (12VDC/1.75A resilient)	Thermostatically controlled window heater
Fold-down housing body	Protection rating: IP66
Insulated camera mounting	Colour: RAL9002
Housing body length: 300mm	Accessory: High PoE injector

## Specifications

Series	eneo VTL
Maximum installation length	240
Housing length (L)	300mm
Weight	4.0kg
Max. camera size (LxWxH)	240x105x86mm
Clear Shield	no
Window heater	yes, 12V / 7W (PTC)
Blower	no
Wiper	no
Supply voltage	PoE
Power over Ethernet	Built-in HiPoE Splitter with internal wiring
Sunshield	yes
Hidden cable management	yes

# VTL-300/WW-POE

(Continuation Specifications)

<b>Cable entry</b>	Through the wall bracket
<b>Cable connection</b>	RJ-45
<b>Integrated wall mount</b>	yes
<b>Protection rating</b>	IP66
<b>Housing</b>	outdoor
<b>Housing material</b>	aluminium
<b>Colour (housing)</b>	RAL9002
<b>Temperature range</b>	-20°C ~+50°C
<b>Dimensions (HxWxD)</b>	see drawing
<b>Remarks</b>	The specified temperature range refers to the housing only. The usable temperature range for the entire combination, indoors and outdoors, depends strongly on the expected ambient temperature and the type of camera used.
<b>Certificates</b>	CE

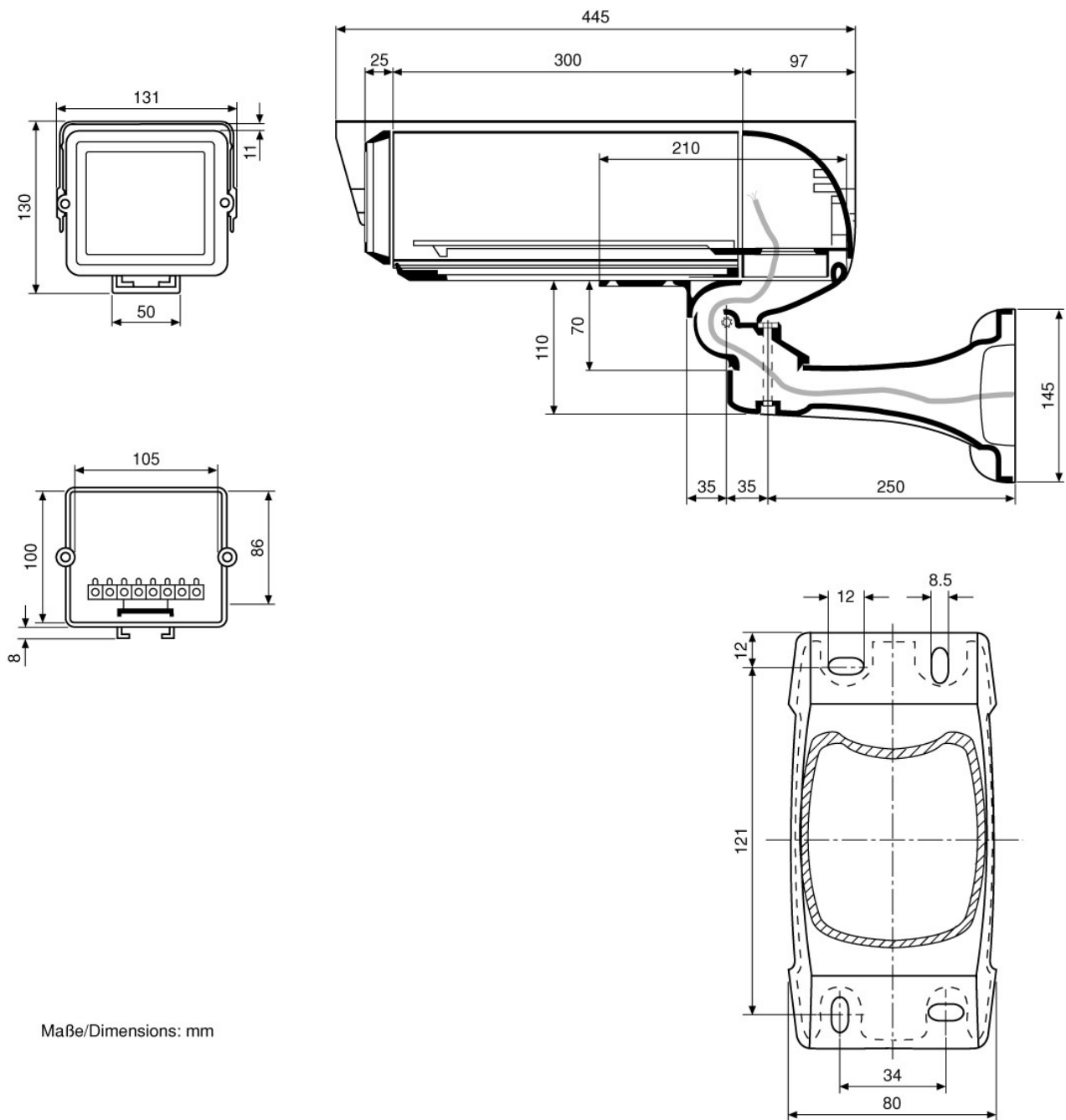
## Optional accessories

<b>79593</b>	<b>PM-6D</b>	Pole Mount Adapter for 2 Wall Mounts, (50-140mm Pole), RAL9002
<b>79592</b>	<b>PM-6S</b>	Pole Mount Adapter for 1 Wall Mount, (50-140mm Pole), RAL9002
<b>79707</b>	<b>POE INJECTOR-01</b>	Single Channel High PoE Injector, 230VAC
<b>79604</b>	<b>SU-6</b>	Camera Height Adjustment Kit for VHK and EHL Housings (3 Diff. Slides and Screws)
<b>79613</b>	<b>CMA-2</b>	Corner Mount Adapter for Wall Brackets WD-5, WD-7, VTL-WW, VHK-WW, RAL9002

# VTL-300/WW-POE

Home | Security | Housings | for Boxed Cameras

## Technical drawing



Maße/Dimensions: mm

SLD Security & Communications  
The Old Forge, Ockham Lane, Ockham, Surrey GU236PH England  
Phone +44.1483225633 · Fax +44.1483225634  
sales@sld.co.uk · www.sld.co.uk

