

PM-6S

Home | Security | Housings | Accessories

PM-6S

Pole Mount Adapter for 1 Wall Mount,

(50-140mm Pole), RAL9002

Art-Nr. 79592



Main Features

For pole mounting
Fixing for wall brackets WD-5/MK or WD-7/MK
For housing series: VTL and VTL/WW

Rugged construction
Ready for installation

Specifications

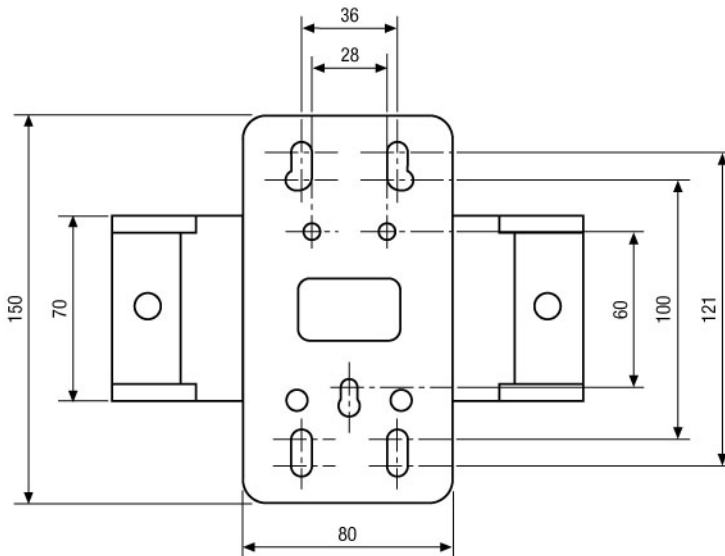
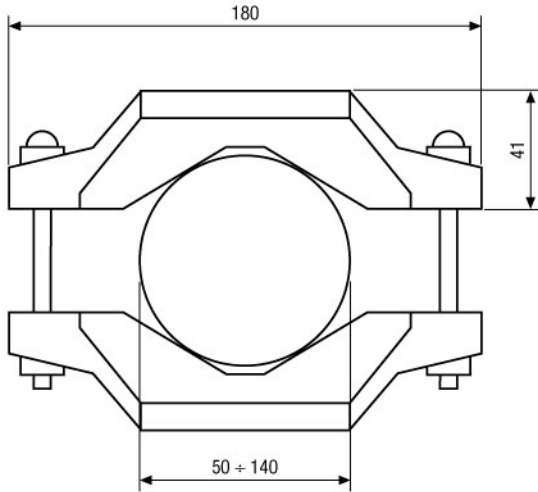
Colour	RAL9002
For pole diameters	50 ~140mm
Load capacity	20kg
Kind of mounting	Screw-fixed mounting bracket and locking jaw
Material	Di-cast aluminium
Dimensions (HxWxD)	see drawing

PM-6S

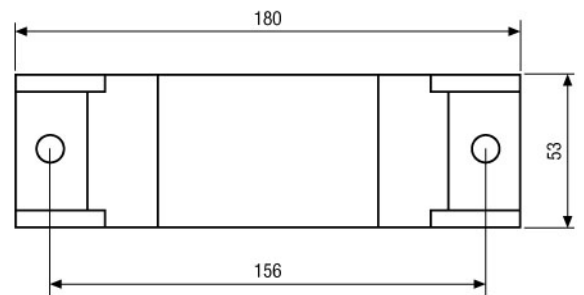
Product information

*) Fitted for the wall brackets WD-5/MK, WD-7/MK and WD-31/MK as well (Attention: partwise different finish)

Technical drawing



Montageplatte
Bracket holder



Gegenplatte
Locking plate

Maße/Dimensions: mm

SLD Security & Communications
The Old Forge, Ockham Lane, Ockham, Surrey GU236PH England
Phone +44.1483225633 · Fax +44.1483225634
sales@sld.co.uk · www.sld.co.uk

