

# Video Security



## VK-1320/WDDG2

1/3" B/W Dome Camera, Drop-Ceiling Mount with 4-8mm Varifocal Lens, 12VDC, 380TVL

Art-Nr. 91972



## Features

**For Wall and Drop-ceiling Mount**

**Vandal and Tamper-Resistant**

**Clear Lexan Bubble with Inner Liner**

**B&W CCD Board Camera with Manual Varifocal Lens**

**1/3" CCD Sensor**

**Resolution of 380 Horizontal Lines**

**Automatic Shutter Control (AES)**

**Automatic Gain Control (AGC)**

**Back Light Compensation (BLC)**

**Integrated F1.6/4-8mm Varifocal Lens**

**For Easy Indoor and Outdoor Installation**

## Specifications

<b>Gain control</b>	Automatic
<b>Signal-to-noise ratio</b>	46dB (AGC OFF)
<b>Automatic shutter control (AES)</b>	1/50 to 1/100,000sec.
<b>Horizontal angle of view</b>	Approx. 63°-34°
<b>Cable connection</b>	Video (BNC), 12VDC (DC jack)
<b>Protection rating</b>	IP X5 (IP65 at installation, e. g. using of all sealing rings and appropriate glands)
<b>Parts supplied</b>	Mounting kit, 1/2" gland, Blind covers, Torx wrench key
<b>Bubble</b>	Vandal resistant 3mm clear polycarbonate bubble with inner liner
<b>Cable entry</b>	3/4" and 1/2" thread for conduit glands, lock stopper included
<b>Housing</b>	Die-cast aluminium with clear polycarbonate bubble
<b>Video output</b>	1Vp-p, VBS, 75ohms
<b>Temperature range</b>	-10°C to +45°C
<b>System</b>	CCIR/PAL
<b>Synchronization</b>	Internal
<b>Lens</b>	F 1.6-2.4/4-8 mm (fixed iris)

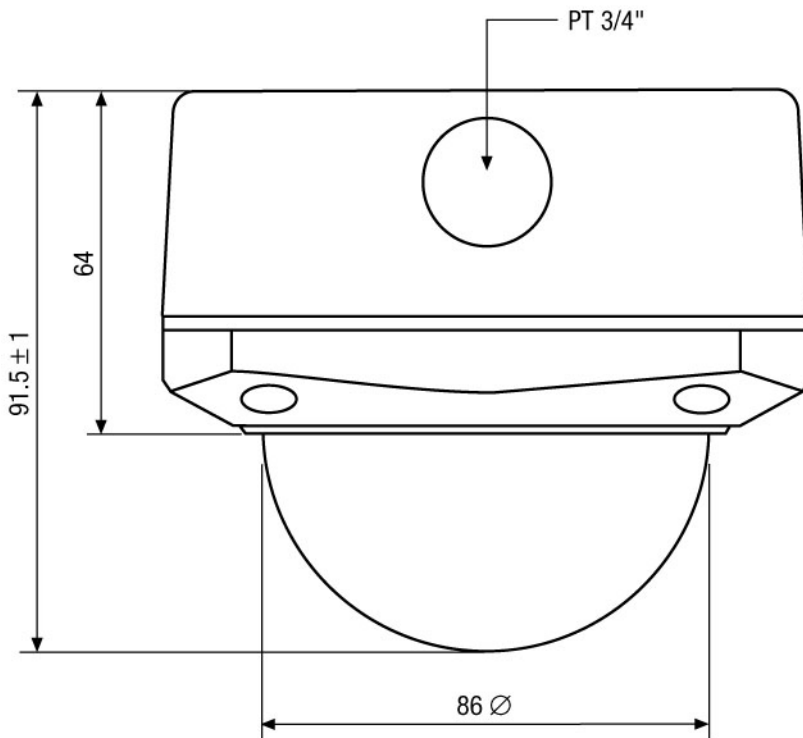
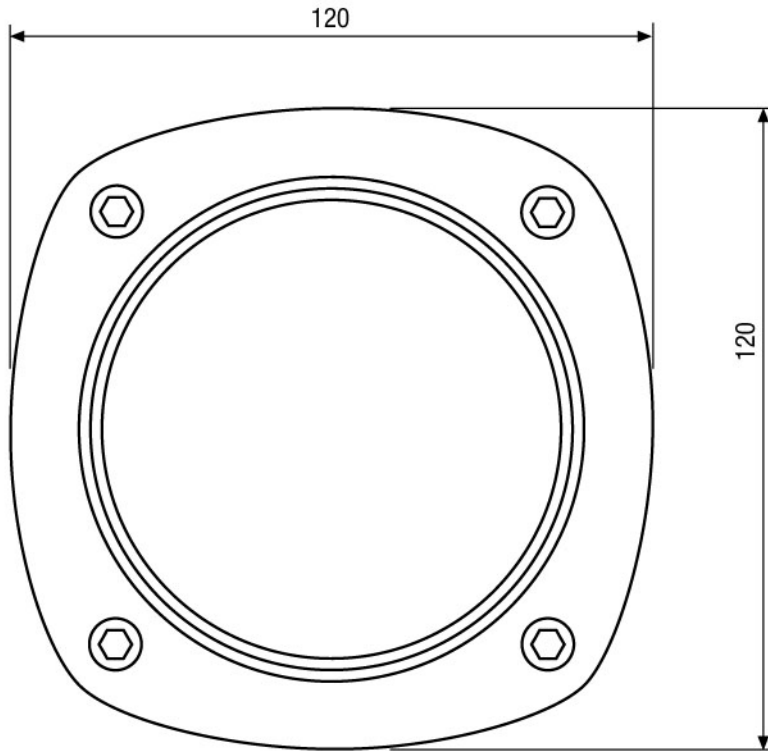
## VK-1320/WDDG2

(Specifications continued)

<b>Power consumption</b>	Approx. 2.0watts
<b>Horizontal resolution</b>	380 TV lines
<b>Weight</b>	Approx. 750g
<b>Backlight compensation (BLC)</b>	60% center weighted
<b>Gamma correction</b>	0.45
<b>Sensitivity at 50% video signal</b>	0.3Lux at F2.0 (VT measurement result); 0.14Lux at F1.2
<b>Supply voltage</b>	12VDC (+/-10 %)
<b>Imager</b>	1/3" Sony Super HAD Interline Transfer CCD
<b>Active picture elements</b>	Approx. 300,000 (H) 512 x (V) 582 pixels
<b>Dimensions (HxWxD)</b>	See drawing

## Accessories

<b>70447 / VT-PS12DC-5</b>	Plug-in Power Supply 100-240VAC/12VDC
<b>77772 / VT-PS12DCDT</b>	PSU 12VDC/0,5A, Desktop version



Maße/Dimensions: mm