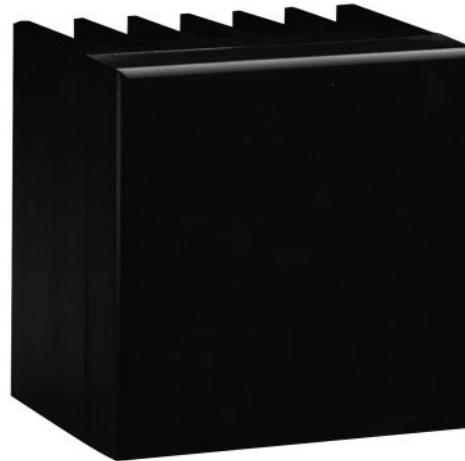


WFL-II/LED15-12

Home | Security | Lighting | Infrared

WFL-II/LED15-12
LED Infrared Illuminator 950nm, Wide Flood, 15W,
12VDC

Art-Nr. 73826



Main Features

Power rating: 15W	Protection rating: IP66
Spectral emission: 950nm	Vibration-resistant
Narrow-band light emission	Low self-heating
Beam angle: 40°	No maintenance required

Specifications

Lamp type	LED
Spectral emission	950 nm
Spectral half-value range	80nm
Angle of light source h	40°
Scene coverage	15 m
75% reduced light emission after	>100,000h
Twilight switch	optional
Heating above ambient air temperature	Max. 35°C
Power supply unit	optional
Protection rating	IP66
Supply voltage	12VDC
Power consumption	15W
Temperature range (operation)	-30°C ~+50°C
Housing	Aluminium with plastic cover
Dimensions (HxWxD)	66x66x55 mm

WFL-II/LED15-12

(Continuation Specifications)

Weight	350g
---------------	------

Optional accessories

71310	WD-8/MK	Wall Mount with Swivel Head, 1/4" Camera Fixing Screw, Black Finish
70023	WD-9N	Wall Mount with Ball Joint, 1/4" Camera Fixing Screw, Black Finish
73827	NE-109N	Power Supply 110-240VAC/12VDC for one LED-Infrared Illuminator 15W, Regulated

WFL-II/LED15-12

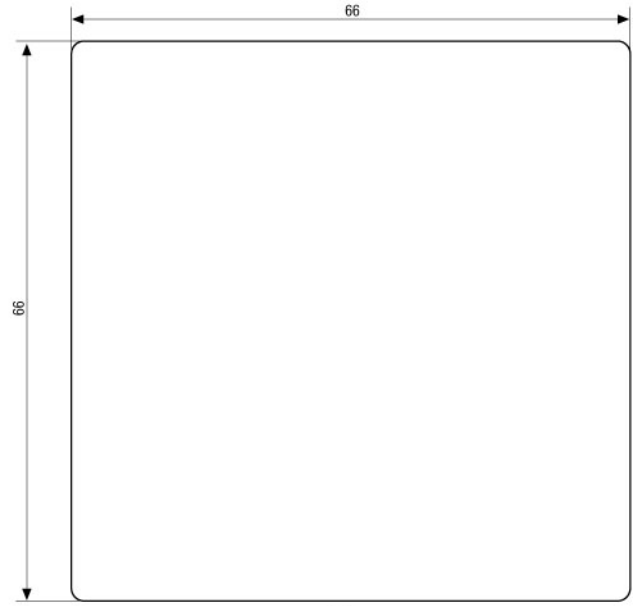
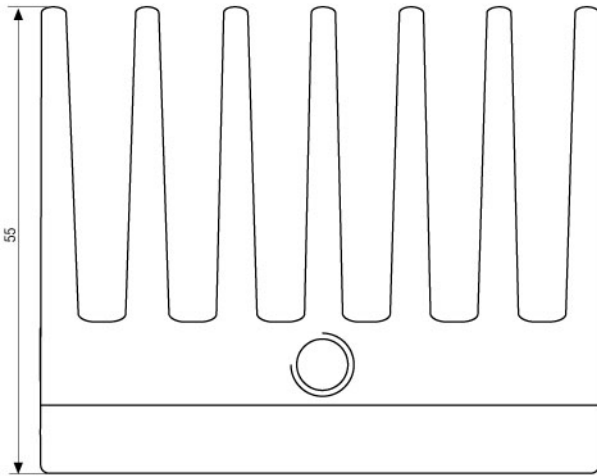
Product information

The best result will be achieved on condition that a camera is used with good sensitivity in the infra-red range, a relative lens aperture of F1.4 min. and a mean reflectance factor for spotlight objects.

WFL-II/LED15-12

Home | Security | Lighting | Infrared

Technical drawing



Befestigungsgewinde 1/4"
Fixing thread 1/4"

Maße/Dimensions: mm

SLD Security & Communications
The Old Forge, Ockham Lane, Ockham, Surrey GU236PH England
Phone +44.1483225633 · Fax +44.1483225634
sales@sld.co.uk · www.sld.co.uk

